



Submittal Data Sheet

1.0-Ton Wall Mounted Unit Cooling Only - FTK12NMVJURK12NMVJU

Project: Yanmar Wall Mount

Submitted by: Alexandra Edinger of DAIKIN APPLIED GEORGIA on 10/4/2017

Submitted to: No Engineer Name Specified

Tags: 1.0-Ton Wall Mounted Unit Cooling Only

FEATURES

- IR controller included
- Titanium apatite photocatalytic air purification filter (option)
- Hot start technology
- Auto-restart (after power failure)

BENEFITS

- Quiet operation
- Low ambient cooling operation down to -4° F with field setting and wind baffle (KPW937E4)
- Operating Range - Cooling (50° - 114.8°)
- 12 year limited parts and compressor warranty with online registration
- 5 Year limited parts warranty for commercial applications

INDOOR UNIT



OUTDOOR UNIT



NOTES

- Requires Adaptor KRP067A41E for use with a wired controller.



Submittal Data Sheet

1.0-Ton Wall Mounted Unit Cooling Only - FTK12NMVJURK12NMVJU

Project: Yanmar Wall Mount

Submitted by: Alexandra Edinger of DAIKIN APPLIED GEORGIA on 10/4/2017

Submitted to: No Engineer Name Specified

Tags: 1.0-Ton Wall Mounted Unit Cooling Only

SYSTEM PERFORMANCE

Indoor Unit Model No.	FTK12NMVJU	Indoor Unit Name:	19 seer ac ductless id 1 ton
Outdoor Unit Model No.	RK12NMVJU	Outdoor Unit Name:	19 SEER, AC, Ductless ODU, 1 Ton
Rated Cooling Capacity (Btu/hr):	10,900	Rated Cooling Conditions:	Indoor (°F DB/WB): 80 / 67 Ambient (°F DB/WB): 95 / 75
Sensible Capacity (Btu/hr):	9,480	Rated Piping Length(ft):	25
Max/Min Cooling Capacity (Btu/hr):	13,300 / 4,400	Rated Height Difference (ft):	0.00
Cooling Input Power (kW):	0.870		
SEER (Non-Ducted/Ducted):	19.00 /		
EER (Non-Ducted/Ducted):	12.50 /		

SYSTEM DETAILS

Refrigerant Type:	R-410A	Cooling Operation Range (°F DB):	50 - 115
Holding Refrigerant Charge (lbs):	2.09	Heating Operation Range (°F WB):	-
Additional Charge (lb/ft):	0.21	Max. Pipe Length (Vertical) (ft):	49
Pre-charge Piping (Length) (ft):	33	Cooling Range w/Baffle (°F DB):	-4 - 115
Max. Pipe Length (Total) (ft):	66	Heating Range w/Baffle (°F WB):	-
Max Height Separation (Ind to Ind ft):	0		

Submittal Data Sheet

1.0-Ton Wall Mounted Unit Cooling Only - FTK12NMVJURK12NMVJU

Project: Yanmar Wall Mount

Submitted by: Alexandra Edinger of DAIKIN APPLIED GEORGIA on 10/4/2017

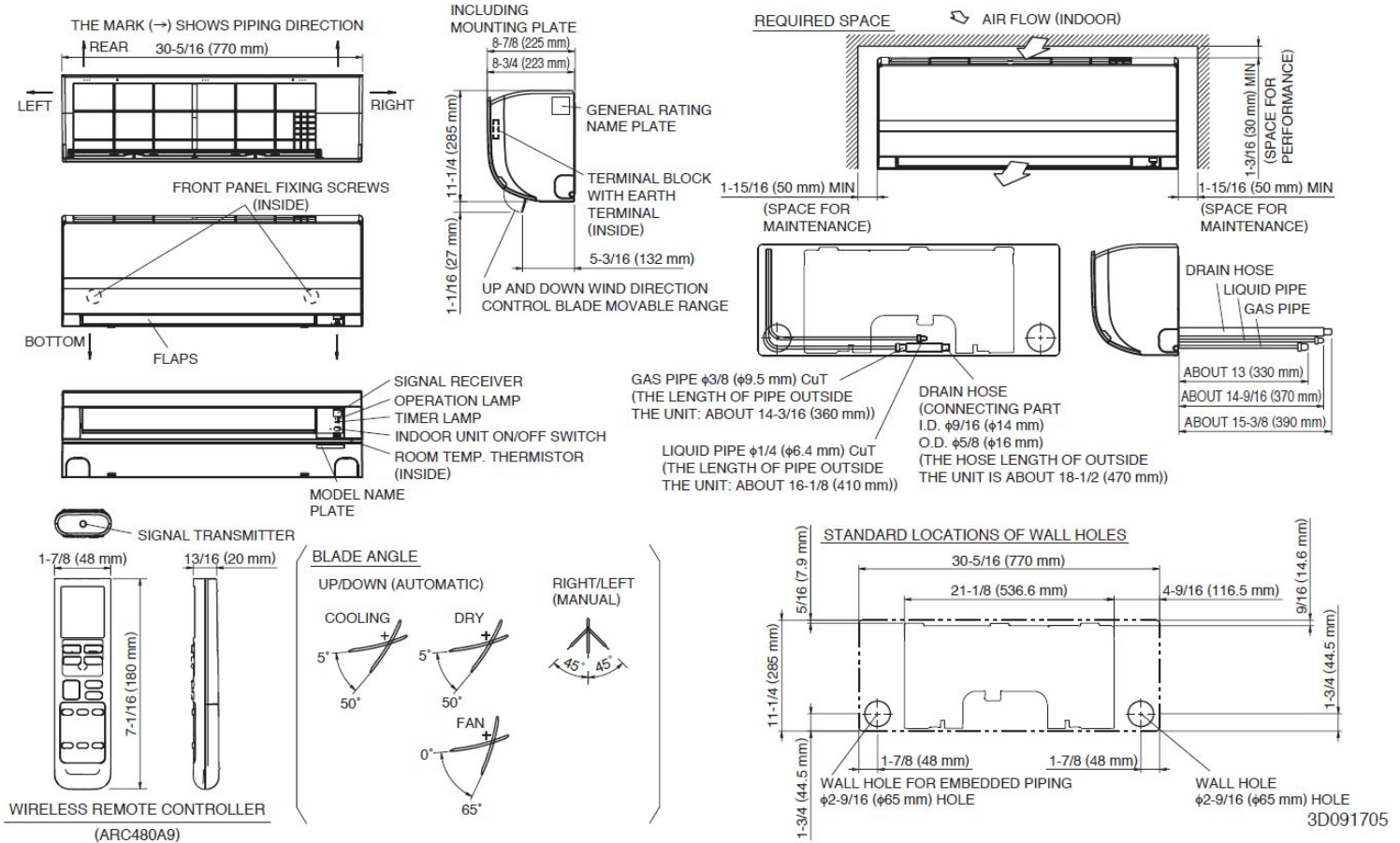
Submitted to: No Engineer Name Specified

Tags: 1.0-Ton Wall Mounted Unit Cooling Only

INDOOR UNIT DETAILS

Power Supply (V/Hz/Ph):	208-230 / 60 / 1	Airflow Rate (H/M/L/SL) (CFM):	434/311/247/145
Power Supply Connections:	See Outdoor Unit for Electrical Specs	Moisture Removal (Gal/hr):	0.5
Min. Circuit Amps MCA (A):		Gas Pipe Connection (inch):	3/8
Max Overcurrent Protection (MOP) (A):		Liquid Pipe Connection (inch):	1/4
Dimensions (HxWxD) (in):	11-1/4 x 30-5/16 x 8-3/4	Condensate Connection (inch):	5/8
Net Weight (lb):	18	Sound Pressure (H/M/L/SL) (dBA):	45/37/30/19
Ext. Static Pressure (Rated/Max) (inWg):	/	Sound Power Level (dBA):	

DIMENSIONAL DRAWING - INDOOR UNIT



Submittal Data Sheet

1.0-Ton Wall Mounted Unit Cooling Only - FTK12NMVJURK12NMVJU

Project: Yanmar Wall Mount

Submitted by: Alexandra Edinger of DAIKIN APPLIED GEORGIA on 10/4/2017

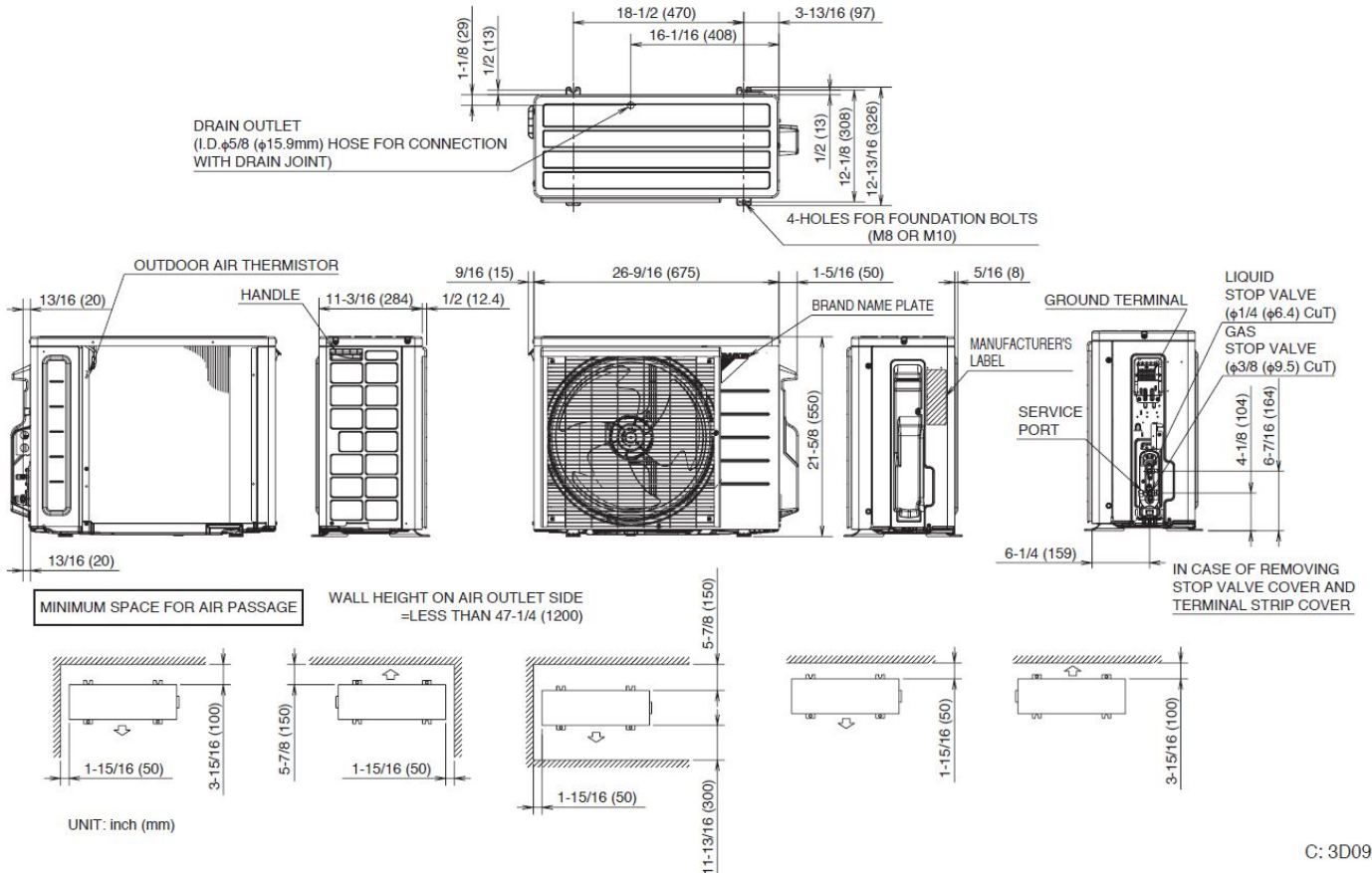
Submitted to: No Engineer Name Specified

Tags: 1.0-Ton Wall Mounted Unit Cooling Only

OUTDOOR UNIT DETAILS

Power Supply (V/Hz/Ph):	208-230 / 60 / 1	Compressor Stage:	
Power Supply Connections:	L1, L2, Ground	Capacity Control Range (%):	-
Min. Circuit Amps MCA (A):	12.2	Airflow Rate (H) (CFM):	1105
Max Overcurrent Protection (MOP) (A):	15	Gas Pipe Connection (inch):	3/8
Max Starting Current MSC(A):		Liquid Pipe Connection (inch):	1/4
Rated Load Amps RLA(A):		Sound Pressure (H) (dBA):	49
Dimensions (HxWxD) (in):	21-5/8 x 26-9/16 x 11-3/16	Sound Power Level (dBA):	
Net Weight (lb):	60		

DIMENSIONAL DRAWING - OUTDOOR UNIT



C: 3D092206