



Submittal Data Sheet

1.0-Ton Wall Mounted Unit - FTX12NMVJURX12NMVJU

Project: Yanmar Wall Mount

Submitted by: Alexandra Edinger of DAIKIN APPLIED GEORGIA on 10/4/2017

Submitted to: No Engineer Name Specified

Tags: 1.0-Ton Wall Mounted Unit Heat Pump

FEATURES

- IR controller included
- Titanium apatite photocatalytic air purification filter (option)
- Hot start technology
- Auto-restart (after power failure)

BENEFITS

- Quiet operation
- Low ambient cooling operation down to -4° F with field setting and wind baffle (KPW937E4)
- Operating Range - Cooling (50°F - 114.8°F)
- Operating Range - Heating (5°F - 64.4°F)
- 12 year limited parts and compressor warranty with online registration
- 5 Year limited parts warranty for commercial applications

INDOOR UNIT



OUTDOOR UNIT



NOTES

- Requires Adaptor KRP067A41E for use with a wired controller.



Submittal Data Sheet

1.0-Ton Wall Mounted Unit - FTX12NMVJURX12NMVJU

Project: Yanmar Wall Mount

Submitted by: Alexandra Edinger of DAIKIN APPLIED GEORGIA on 10/4/2017

Submitted to: No Engineer Name Specified

Tags: 1.0-Ton Wall Mounted Unit Heat Pump

SYSTEM PERFORMANCE

Indoor Unit Model No.	FTX12NMVJU	Indoor Unit Name:	19 seer hp ductless id 1 ton
Outdoor Unit Model No.	RX12NMVJU	Outdoor Unit Name:	19 SEER, Heat Pump, Ductless ODU, 1 Ton
Rated Cooling Capacity (Btu/hr):	10,900	Rated Cooling Conditions:	Indoor (°F DB/WB): 80 / 67 Ambient (°F DB/WB): 95 / 75
Sensible Capacity (Btu/hr):	9,480	Rated Piping Length(ft):	25
Max/Min Cooling Capacity (Btu/hr):	13,300 / 4,400	Rated Height Difference (ft):	0.00
Cooling Input Power (kW):	0.870	Rated Heating Conditions:	Indoor (°F DB/WB): 70 / 60 Ambient (°F DB/WB): 47 / 43
SEER (Non-Ducted/Ducted):	19.00 /	HSPF (Non-Ducted/Ducted):	9.0 /
EER (Non-Ducted/Ducted):	12.50 /	Heating COP (Non-Ducted/Ducted):	3.8 /
Rated Heating Capacity (Btu/hr):	13,500		
Max/Min Heating Capacity (Btu/hr):	16,400 / 4,400		
Heating Input Power (kW):	1.04		

SYSTEM DETAILS

Refrigerant Type:	R-410A	Cooling Operation Range (°F DB):	50 - 115
Holding Refrigerant Charge (lbs):	2.09	Heating Operation Range (°F WB):	5 - 65
Additional Charge (lb/ft):	0.21	Max. Pipe Length (Vertical) (ft):	49
Pre-charge Piping (Length) (ft):	33	Cooling Range w/Baffle (°F DB):	-4 - 115
Max. Pipe Length (Total) (ft):	66	Heating Range w/Baffle (°F WB):	5 - 65
Max Height Separation (Ind to Ind ft):	0		

Submittal Data Sheet

1.0-Ton Wall Mounted Unit - FTX12NMV/JURX12NMV/JU

Project: Yanmar Wall Mount

Submitted by: Alexandra Edinger of DAIKIN APPLIED GEORGIA on 10/4/2017

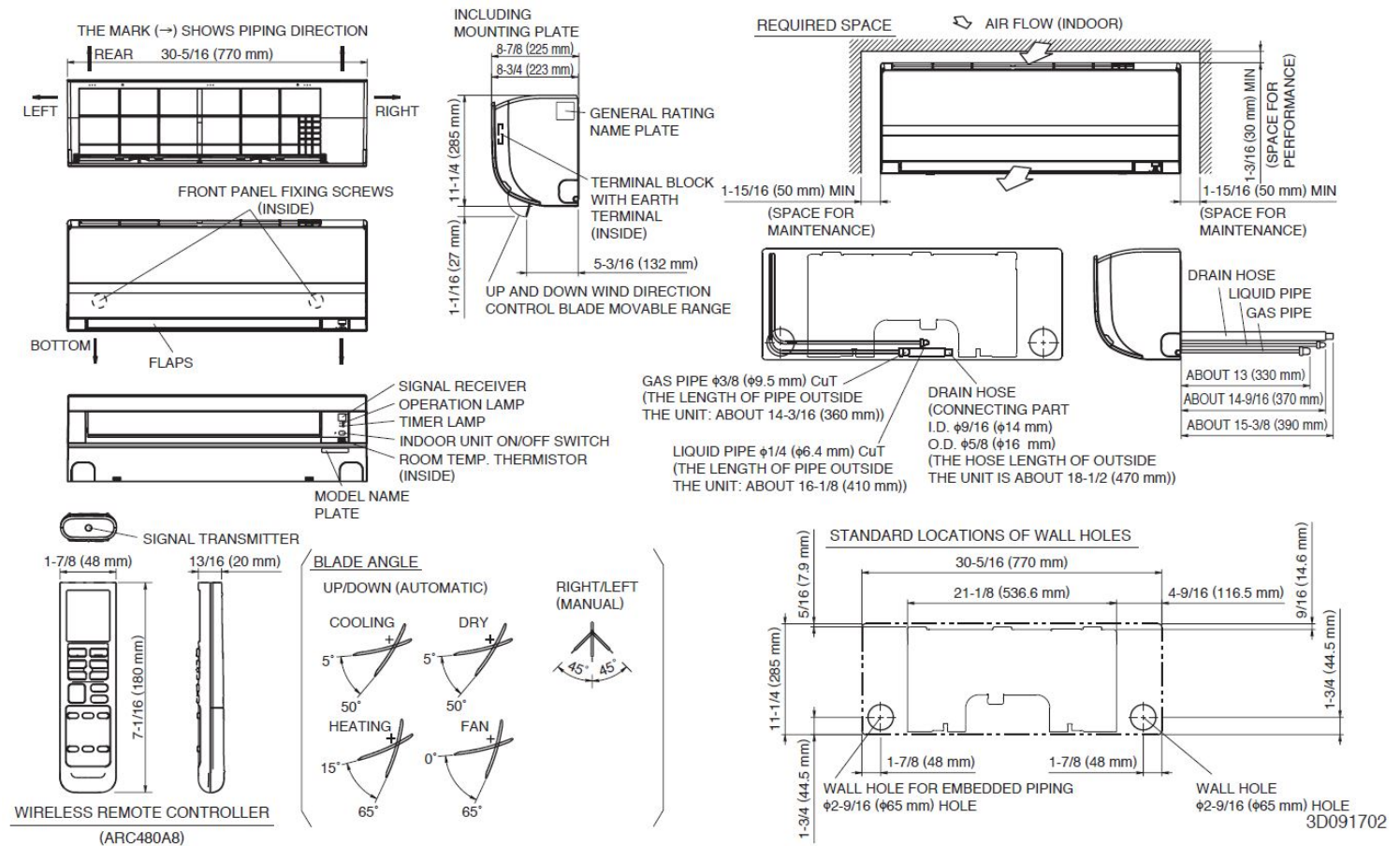
Submitted to: No Engineer Name Specified

Tags: 1.0-Ton Wall Mounted Unit Heat Pump

INDOOR UNIT DETAILS

Power Supply (V/Hz/Ph):	208-230 / 60 / 1	Airflow Rate (H/M/L/SL) (CFM):	434/311/247/145
Power Supply Connections:	See Outdoor Unit for Electrical Specs	Moisture Removal (Gal/hr):	0.5
Min. Circuit Amps MCA (A):		Gas Pipe Connection (inch):	3/8
Max Overcurrent Protection (MOP) (A):		Liquid Pipe Connection (inch):	1/4
Dimensions (HxWxD) (in):	11-1/4 x 30-5/16 x 8-3/4	Condensate Connection (inch):	5/8
Net Weight (lb):	18	Sound Pressure (H/M/L/SL) (dBA):	45/37/30/19
Ext. Static Pressure (Rated/Max) (inWg):	/	Sound Power Level (dBA):	

DIMENSIONAL DRAWING - INDOOR UNIT





Submittal Data Sheet

1.0-Ton Wall Mounted Unit - FTX12NMVJURX12NMVJU

Project: Yanmar Wall Mount

Submitted by: Alexandra Edinger of DAIKIN APPLIED GEORGIA on 10/4/2017

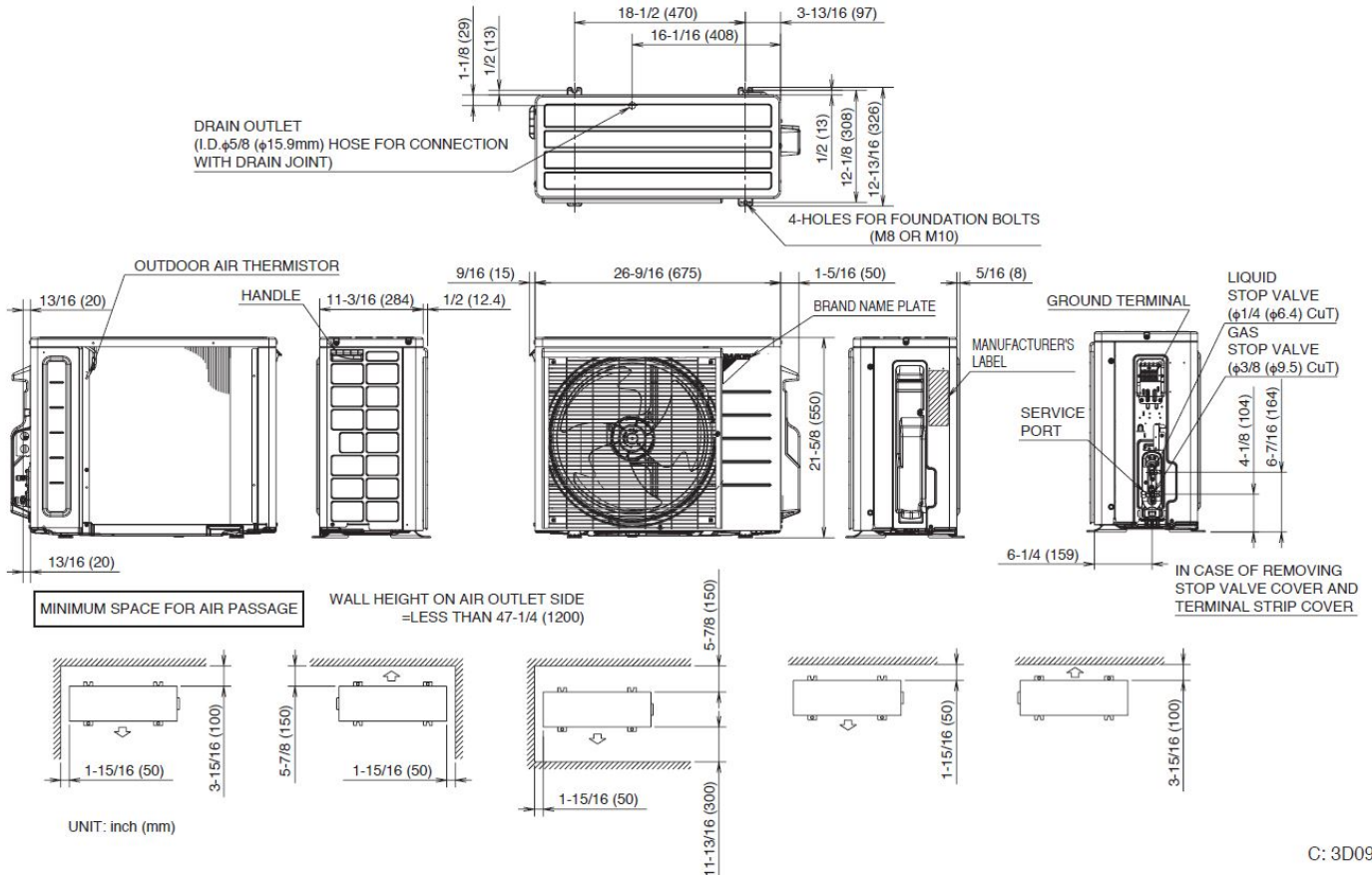
Submitted to: No Engineer Name Specified

Tags: 1.0-Ton Wall Mounted Unit Heat Pump

OUTDOOR UNIT DETAILS

Power Supply (V/Hz/Ph):	208-230 / 60 / 1	Compressor Stage:	
Power Supply Connections:	L1, L2, Ground	Capacity Control Range (%):	-
Min. Circuit Amps MCA (A):	12.2	Airflow Rate (H) (CFM):	1105
Max Overcurrent Protection (MOP) (A):	15	Gas Pipe Connection (inch):	3/8
Max Starting Current MSC(A):		Liquid Pipe Connection (inch):	1/4
Rated Load Amps RLA(A):		Sound Pressure (H) (dBA):	49
Dimensions (HxWxD) (in):	21-5/8 x 26-9/16 x 11-3/16	Sound Power Level (dBA):	
Net Weight (lb):	60		

DIMENSIONAL DRAWING - OUTDOOR UNIT



C: 3D092206

Daikin North America LLC, 5151 San Felipe, Suite 500, Houston, TX, 77056

Daikin City Generated Submittal Data

www.daikinac.com www.daikincomfort.com

(Daikin's products are subject to continuous improvements. Daikin reserves the right to modify product design, specifications and information in this data sheet without notice and without incurring any obligations)

Submittal Date: 10/4/2017 11:35:25 AM

Page 4 of 4