

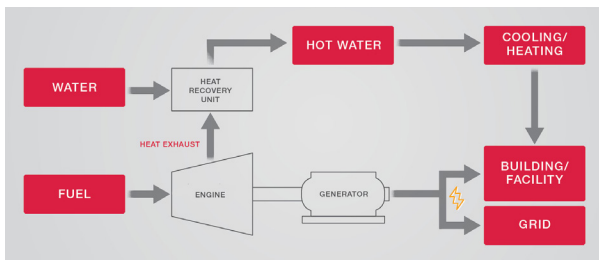


CP25VB3



Using natural gas, the CP25VB3's high-efficiency generator provides 25kW of electrical power. The engine heat is captured and heats water at a rated temperature of 176°F for immediate use or storage in your facility.

CHP Basic Flow



Model		CP25VB3		
		CP25VB3-TNB	CP25VB3Z-TNB	
Power	Output	Rated Output	25 kW	
		Voltage	200 V, 60Hz	
		Phases/ Wires	Three phase, 3 wire	
		Modulation	0.5 to 25 kW with optional CT/ Transducer kit (*1)	
Fuel	Gas type		Natural gas	
	Pressure	Standard	8 in WC (2kPa)	
		Range	4 ~ 10 in WC (1 ~ 2.5kPa)	
	Consumption (LHV)		254,500 BTU (74.6kW)	
			2.55 therms/hr	
Consumption (HHV) (*2)		282,000 BTU		
		2.82 therms/hr		
Heat output	Rated recovered heat		131,000 BTU/h (38.4 kW)	
	Rated hot water temp.	Inlet	167 F (75 C)	
		Outlet	176 F (80 C)	
	Rated Hot water flow rate		29.0 GPM (110 L/min)	
	Maximum hot water temp. (Outlet)		185 F (85 C)	
Input power	Voltage, Frequency		200V, 60Hz	
	Starting current		46 A	
	Power consumption	Radiator fan stop	0.70 kW	0.77 kW
		Radiator fan run	1.14 kW	1.22 kW
Gross Efficiency (LHV)	Overall efficiency		85%	
	Electrical generation efficiency		33.5%	
	Exhaust heat recovery ratio		51.5%	
Sound level	Radiator fan stopped		62 dB (A)	
	Radiator fan operating		64 dB (A)	
Dimensions	Width		78.3 in (1,990 mm)	
	Depth		31.5 in (800 mm)	
	Height		79.1 in (2,010 mm)	
	Net weight		2,700 lb (1,225 kg)	2,822 lb (1,280 kg)
Maintenance Interval		10,000 hrs		
Standard Warranty		2 Years; Unlimited Hours		
YES Product Protection	10 Years / 30,000 hrs		Optional	
	10 Years / 60,000 hrs		Optional	
	15 Years / 90,000 hrs		n/a	
Emissions & Certifications		Not for Sale in U.S.A.		

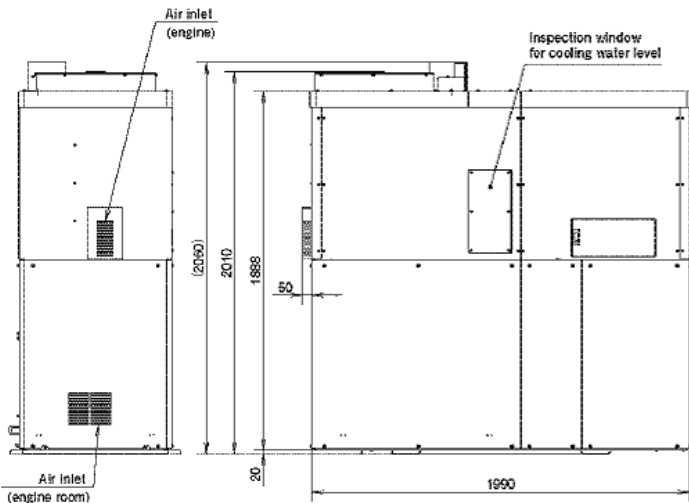
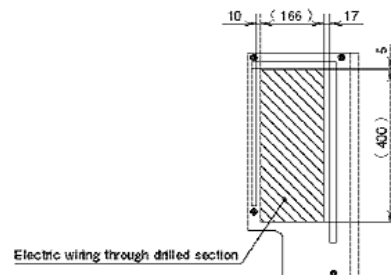
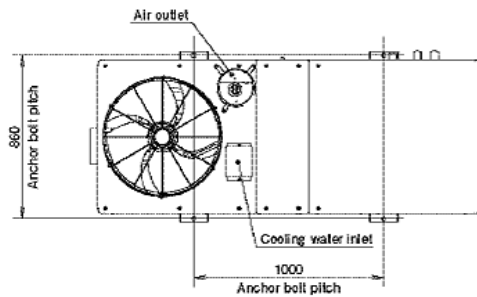
*1: The minimum modulation amount is dependent on the CT and Transducer specifications.

*2: Natural gas calculations for fuel consumption are based on converting LHV to HHV: LHV= 983 BTU/scf, HHV = 1,089 BTU/scf

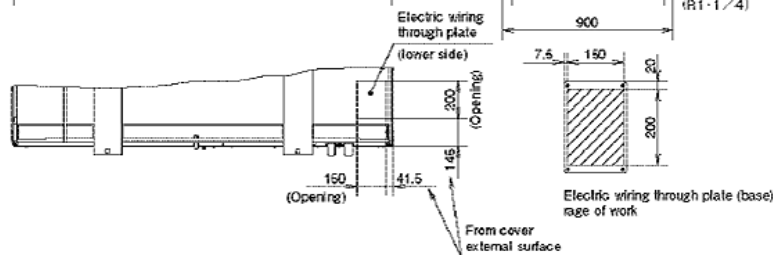
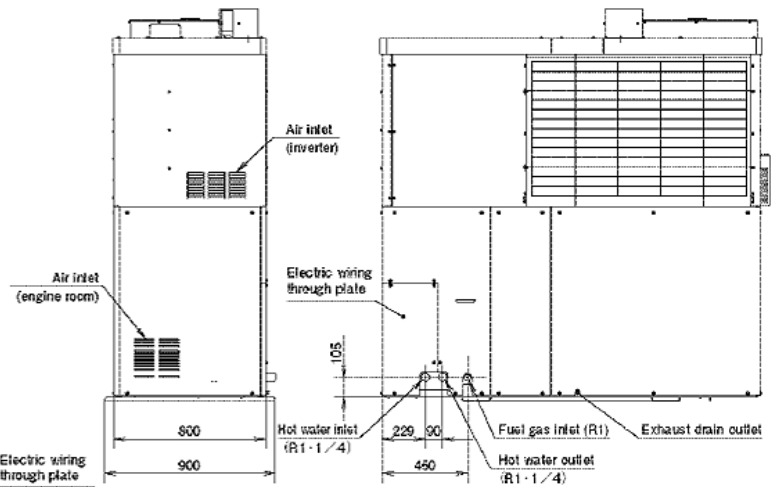
NOTE: Due to YANMAR's ongoing commitment to quality, specifications, ratings and dimensions subject to change without notice. Improper installation, adjustment, alteration, service or maintenance can cause property damage or personal injury. Installation and service must be in accordance with current specifications, ratings and dimensions and be performed by a qualified installer and servicing agency.



CP25VB3



Electric wiring through section detail



Unit: mm

NOTE: Due to YANMAR's ongoing commitment to quality, specifications, ratings and dimensions subject to change without notice. Improper installation, adjustment, alteration, service or maintenance can cause property damage or personal injury. Installation and service must be in accordance with current specifications, ratings and dimensions and be performed by a qualified installer and servicing agency.